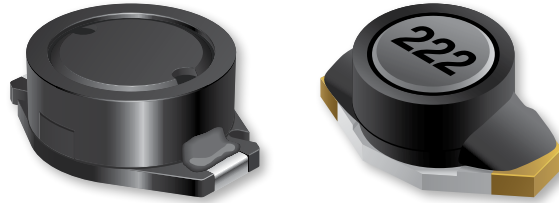




PRODUCT CHANGE NOTIFICATION

MAGNETICS



Bourns® Model SRR6603, PM1608S, and SRE6603 Series Shielded Power Inductors

Addition of New Manufacturing Site

Riverside, California – May 7, 2024 – In order to support our fast-growing demand and enhance continuity of supply, effective October 30, 2024, Bourns will establish a new additional manufacturing site in China for the Model [SRR6603](#), [PM1608S](#), and [SRE6603](#) Series Shielded Power Inductors.

A list of affected part numbers is included below.

Affected Part Numbers					
SRR6603-1R0ML	SRR6603-470ML	SRR6603-222ML	PM1608S-4R7M-RC	PM1608S-221M-RC	PM1608S-103M-RC
SRR6603-1R5ML	SRR6603-680ML	SRR6603-332ML	PM1608S-6R8M-RC	PM1608S-331M-RC	SRE6603-152M
SRR6603-2R2ML	SRR6603-101ML	SRR6603-472KL	PM1608S-100M-RC	PM1608S-471M-RC	SRE6603-222M
SRR6603-3R3ML	SRR6603-151ML	SRR6603-472ML	PM1608S-150M-RC	PM1608S-681M-RC	SRE6603-332M
SRR6603-4R7ML	SRR6603-221ML	SRR6603-682ML	PM1608S-220M-RC	PM1608S-102M-RC	SRE6603-472M
SRR6603-6R8ML	SRR6603-331ML	SRR6603-103ML	PM1608S-330M-RC	PM1608S-152M-RC	SRE6603-682M
SRR6603-100ML	SRR6603-471ML	PM1608S-1R0M-RC	PM1608S-470M-RC	PM1608S-222M-RC	SRE6603-103M
SRR6603-150ML	SRR6603-681ML	PM1608S-1R5M-RC	PM1608S-680M-RC	PM1608S-332M-RC	
SRR6603-220ML	SRR6603-102ML	PM1608S-2R2M-RC	PM1608S-101M-RC	PM1608S-472M-RC	
SRR6603-330ML	SRR6603-152ML	PM1608S-3R3M-RC	PM1608S-151M-RC	PM1608S-682M-RC	

Users should verify that the described changes will not impact the performance of the product in their specific applications.

IC24074

The new additional manufacturing site uses the same design, material, and manufacturing process as the existing site. The inductors produced at the new additional manufacturing site will meet the same data sheet specifications as the inductors from the existing site.

The assembly process will not change at the new additional manufacturing site.

The form, fit, function, quality, reliability, and country of origin of the affected part numbers from the new manufacturing location will remain the same as those of the existing site. Traceability will be maintained through lot code and date code.

Samples are available upon request. Bourns recommends that customers test the affected part numbers in their specific applications for verification of satisfactory performance.

Implementation dates are as follows:

Date that deliveries of products manufactured at both manufacturing site will begin: ***October 30, 2024***

First date code using the above changes: ***2444***

Orders for the affected part numbers received after October 30, 2024 may be filled interchangeably from the existing manufacturing site or the new additional manufacturing site.

If you have any questions or need additional information, please feel free to [contact Customer Service/Inside Sales](#).

Users should verify that the described changes will not impact the performance of the product in their specific applications.