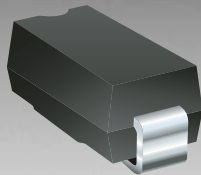


\*ROHS COMPLIANT



**BOURNS®**

## Features

- Lead free
  - RoHS compliant\*
  - Reverse voltage from 20 to 60 V
  - Forward current of 2 A
  - High current capability
- For use in low voltage high frequency inverters, free wheeling and polarity protection applications

## CD214B-B220 ~ B260 Schottky Barrier Rectifier Chip Diode

### General Information

The markets of portable communications, computing and video equipment are challenging the semiconductor industry to develop increasingly smaller electronic components.

Bourns offers Schottky Rectifier Diodes for rectification applications, in compact chip package DO-214AA (SMB) size format, which offer PCB real estate savings and are considerably smaller than competitive parts. The Schottky Rectifier Diodes offer a forward current of 2 A with a choice of repetitive peak reverse voltage of 20 V up to 60 V.

Bourns® Chip Diodes conform to JEDEC standards, are easy to handle with standard pick and place equipment and the flat configuration minimizes roll away.

### Electrical Characteristics (@ T<sub>A</sub> = 25 °C Unless Otherwise Noted)

Parameter	Symbol	CD214B-					Unit
		B220	B230	B240	B250	B260	
Forward Voltage (Max.) (I <sub>f</sub> = 2 A)	V <sub>F</sub>	0.5	0.5	0.5	0.7	0.7	V
Typical Junction Capacitance*	C <sub>T</sub>	200					pF
Reverse Current (Max.) at Rated V <sub>R</sub> )	I <sub>R</sub>	0.5	0.5	0.5	0.5	0.5	mA

\* Measured at 1.0 MHz and applied reverse voltage of 4.0 V DC.

### Absolute Ratings (@ T<sub>A</sub> = 25 °C Unless Otherwise Noted)

Parameter	Symbol	CD214B-					Unit
		B220	B230	B240	B250	B260	
Repetitive Peak Reverse Voltage	V <sub>RRM</sub>	20	30	40	50	60	V
Reverse Voltage	V <sub>R</sub>	20	30	40	50	60	V
Maximum RMS Voltage	V <sub>RMS</sub>	14	21	28	35	42	V
Avg. Forward Current	I <sub>O</sub>	2					A
Forward Current, Surge Peak (60 Hz, 1 cycle)	I <sub>surge</sub>	50	50	50	50	50	A
Typical Thermal Resistance**	R <sub>θJL</sub>	15	15	15	15	15	°C/W
Storage Temperature	T <sub>STG</sub>	-55 to +150					°C
Junction Temperature	T <sub>J</sub>	-55 to +125					°C

\*\* Thermal resistance junction to lead.



*Reliable Electronic Solutions*

**Asia-Pacific:**

Tel: +886-2 2562-4117 • Fax: +886-2 2562-4116

**Europe:**

Tel: +41-41 768 5555 • Fax: +41-41 768 5510

**The Americas:**

Tel: +1-951 781-5500 • Fax: +1-951 781-5700

[www.bourns.com](http://www.bourns.com)

\*RoHS Directive 2002/95/EC Jan 27 2003 including Annex

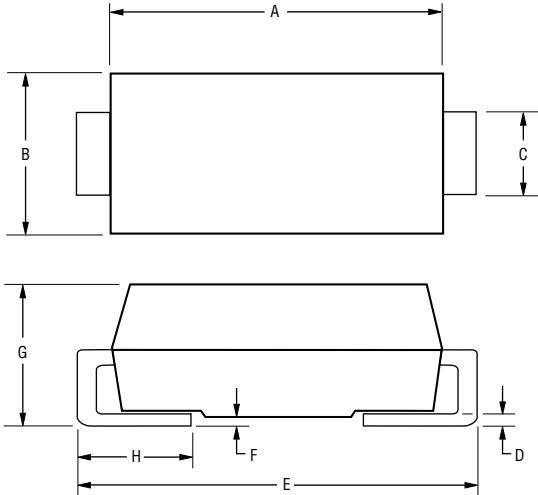
Specifications are subject to change without notice.

Customers should verify actual device performance in their specific applications.

# CD214B-B220 ~ B260 Schottky Barrier Rectifier Chip Diode



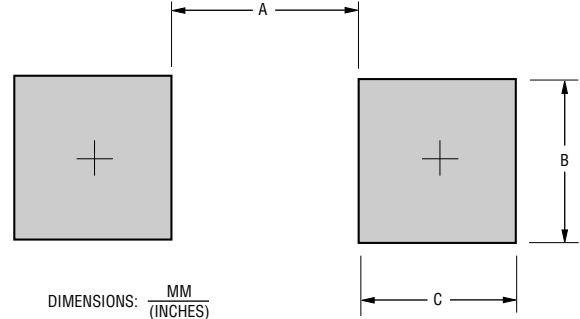
## Product Dimensions



Dimension	SMB (DO-214AA)
A	$\frac{4.06 - 4.57}{(0.160 - 0.180)}$
B	$\frac{3.30 - 3.94}{(0.130 - 0.155)}$
C	$\frac{1.96 - 2.21}{(0.078 - 0.087)}$
D	$\frac{0.15 - 0.31}{(0.006 - 0.112)}$
E	$\frac{5.21 - 5.59}{(0.205 - 0.220)}$
F	$\frac{0.05 - 0.20}{(0.002 - 0.008)}$
G	$\frac{2.01 - 2.62}{(0.080 - 0.103)}$
H	$\frac{0.76 - 1.52}{(0.030 - 0.060)}$

DIMENSIONS:  $\frac{\text{MM}}{\text{(INCHES)}}$

## Recommended Pad Layout



DIMENSIONS:  $\frac{\text{MM}}{\text{(INCHES)}}$

Dimension	SMB (DO-214AA)
A (Max.)	$\frac{2.69}{(0.106)}$
B (Min.)	$\frac{2.10}{(0.083)}$
C (Min.)	$\frac{1.27}{(0.050)}$

## Physical Specifications

Case .....Molded plastic  
 Polarity .....Indicated by cathode band  
 Weight .....0.003 ounces / 0.093 grams

## Typical Part Marking

CD214B-B220 ..... **B 220B**  
 CD214B-B230 ..... **B 230B**  
 CD214B-B240 ..... **B 240B**  
 CD214B-B250 ..... **B 250B**  
 CD214B-B260 ..... **B 260B**

## How To Order

**CD 214B - B 2 30 LF**

Common Code \_\_\_\_\_  
 Chip Diode \_\_\_\_\_  
 Package \_\_\_\_\_  
 • 214B = SMB/DO-214AA  
 Model \_\_\_\_\_  
 B = Schottky Barrier Series  
 Average Forward Current (I<sub>o</sub>) Code \_\_\_\_\_  
 2 = 2 A (Code x 1000 mA = Average Forward Current)  
 Reverse Voltage (V<sub>R</sub>) Code \_\_\_\_\_  
 20 = 20 V  
 30 = 30 V  
 40 = 40 V  
 50 = 50 V  
 60 = 60 V  
 Terminations \_\_\_\_\_  
 LF = 100 % Sn (lead free)

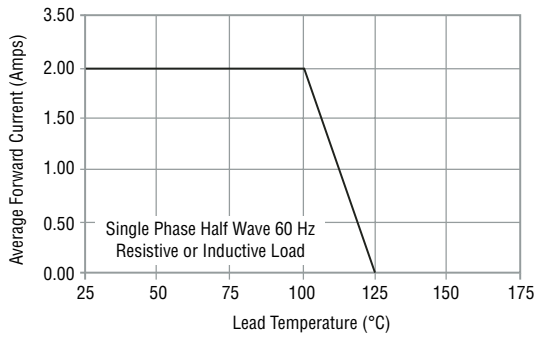
Specifications are subject to change without notice.  
 Customers should verify actual device performance in their specific applications.

# CD214B-B220 ~ B260 Schottky Barrier Rectifier Chip Diode

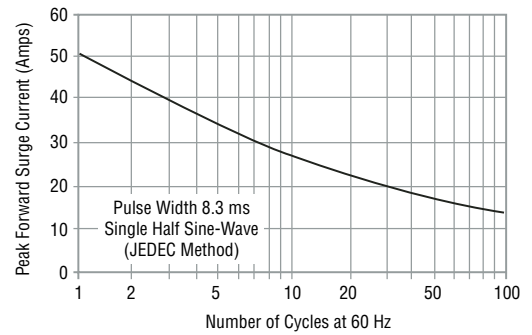


## Rating and Characteristic Curves

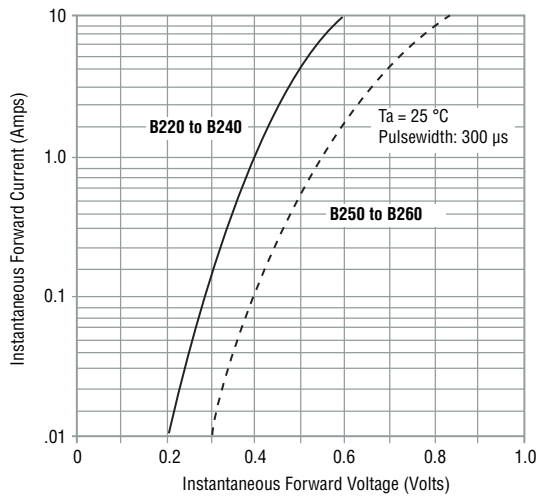
### Forward Current Derating Curve



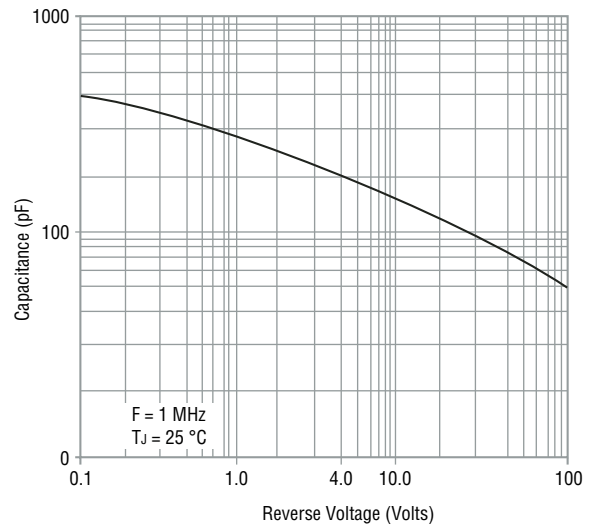
### Maximum Non-Repetitive Surge Current



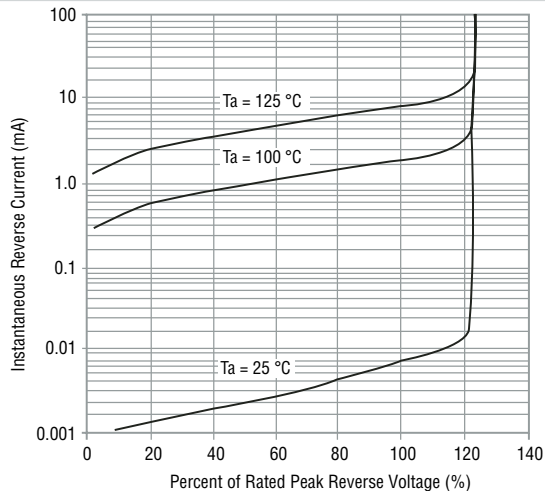
### Typical Forward Characteristics



### Typical Junction Capacitance



### Typical Reverse Characteristics



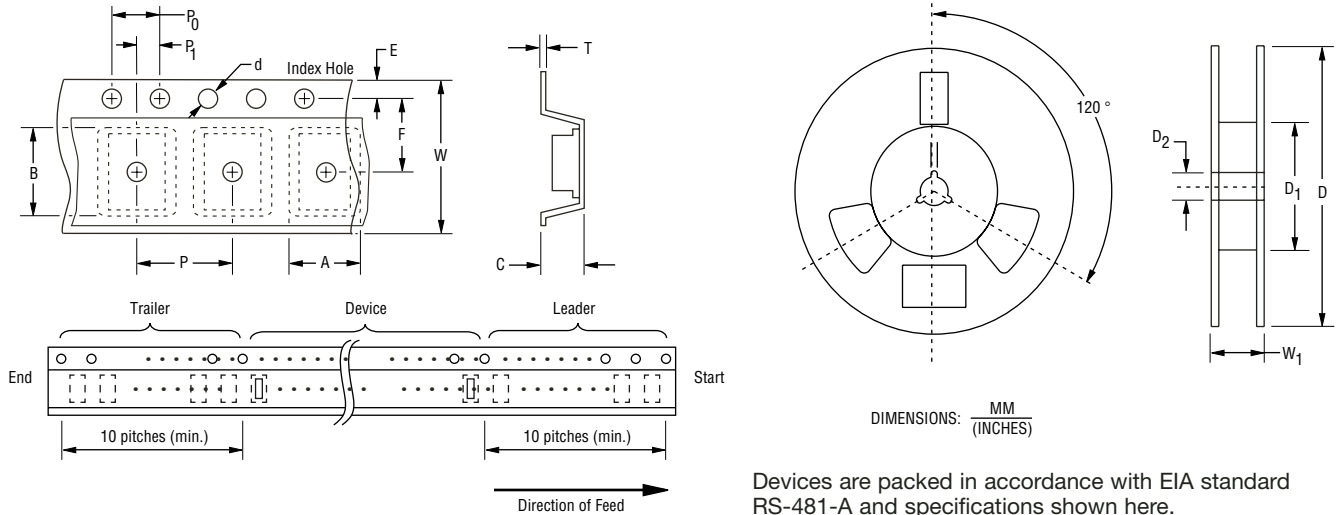
Specifications are subject to change without notice.  
Customers should verify actual device performance in their specific applications.

# CD214B-B220 ~ B260 Schottky Barrier Rectifier Chip Diode



## Packaging Information

The product will be dispensed in Tape and Reel format (see diagram below).



Devices are packed in accordance with EIA standard RS-481-A and specifications shown here.

Item	Symbol	SMB (DO-214AA)
Carrier Width	A	$\frac{4.94 \pm 0.10}{(0.194 - 0.004)}$
Carrier Length	B	$\frac{5.57 \pm 0.10}{(0.219 - 0.004)}$
Carrier Depth	C	$\frac{2.36 \pm 0.10}{(0.093 - 0.004)}$
Sprocket Hole	d	$\frac{1.55 \pm 0.05}{(0.061 - 0.002)}$
Reel Outside Diameter	D	$\frac{330}{(12.992)}$
Reel Inner Diameter	D <sub>1</sub>	$\frac{50.0}{(1.969)}$ MIN.
Feed Hole Diameter	D <sub>2</sub>	$\frac{13.0 \pm 0.20}{(0.512 - 0.008)}$
Sprocket Hole Position	E	$\frac{1.75 \pm 0.10}{(0.069 - 0.004)}$
Punch Hole Position	F	$\frac{5.50 \pm 0.05}{(0.217 - 0.002)}$
Punch Hole Pitch	P	$\frac{4.00 \pm 0.10}{(0.157 - 0.004)}$
Sprocket Hole Pitch	P <sub>0</sub>	$\frac{4.00 \pm 0.10}{(0.157 - 0.004)}$
Embossment Center	P <sub>1</sub>	$\frac{2.00 \pm 0.05}{(0.079 - 0.002)}$
Overall Tape Thickness	T	$\frac{0.30 \pm 0.10}{(0.012 - 0.004)}$
Tape Width	W	$\frac{12.00 \pm 0.20}{(0.472 - 0.008)}$
Reel Width	W <sub>1</sub>	$\frac{18.4}{(0.724)}$ MAX.
Quantity per Reel	--	3,000