



## Test Report

BOURNS INC.  
1200 COLUMBIA AVE., RIVERSIDE, CA 92507-2114,  
U.S.A.

Report No. : CE/2005/B3277  
Date : 2005/11/21  
Page : 1 of 4

The following merchandise was (were) submitted and identified by the client as :

Type of Product : CI10/CI16/CI20/CE20 SERIES  
Sample Received : 2005/11/14  
Testing Date : 2005/11/14 TO 2005/11/21

-----  
Test Result : - Please see the next page -

  
Daniel Yeh, M.R. / Operation Manager  
Signed for and on behalf of  
SGS TAIWAN LTD.

The content of this PDF file is in accordance with the original issued reports for reference only. This Test Report cannot be reproduced, except in full, without prior written permission of the Company.



## Test Report

BOURNS INC.  
1200 COLUMBIA AVE., RIVERSIDE, CA 92507-2114,  
U.S.A.

Report No. : CE/2005/B3277  
Date : 2005/11/21  
Page : 2 of 4

### Test Result

PART NAME NO.1 : MIXED ALL PARTS

Test Item (s):	Unit	Method	MDL	Result	
				No.1	
Monobromobiphenyl	%	With reference to USEPA3540C or USEPA3550C. Analysis was performed by HPLC/DAD, LC/MS or GC/MS. (prohibited by 2002/95/EC (RoHS), 83/264/EEC, and 76/769/EEC)	0.0005	N.D.	
Dibromobiphenyl	%		0.0005	N.D.	
Tribromobiphenyl	%		0.0005	N.D.	
Tetrabromobiphenyl	%		0.0005	N.D.	
Pentabromobiphenyl	%		0.0005	N.D.	
Hexabromobiphenyl	%		0.0005	N.D.	
Heptabromobiphenyl	%		0.0005	N.D.	
Octabromobiphenyl	%		0.0005	N.D.	
Nonabromobiphenyl	%		0.0005	N.D.	
Decabromobiphenyl	%		0.0005	N.D.	
Total PBBs (Polybrominated biphenyls)/Sum of above	%		-	N.D.	
Monobromobiphenyl ether	%		With reference to USEPA3540C or USEPA3550C. Analysis was performed by HPLC/DAD, LC/MS or GC/MS. (prohibited by 2002/95/EC (RoHS), 83/264/EEC, and 76/769/EEC)	0.0005	N.D.
Dibromobiphenyl ether	%			0.0005	N.D.
Tribromobiphenyl ether	%	0.0005		N.D.	
Tetrabromobiphenyl ether	%	0.0005		N.D.	
Pentabromobiphenyl ether	%	0.0005		N.D.	
Hexabromobiphenyl ether	%	0.0005		N.D.	
Heptabromobiphenyl ether	%	0.0005		N.D.	
Octabromobiphenyl ether	%	0.0005		N.D.	
Nonabromobiphenyl ether	%	0.0005		N.D.	
Decabromobiphenyl ether	%	0.0005		N.D.	
Total PBDEs(PBDEs) (Polybrominated biphenyl ethers)/Sum of above	%	-		N.D.	

The content of this PDF file is in accordance with the original issued reports for reference only. This Test Report cannot be reproduced, except in full, without prior written permission of the Company



## Test Report

BOURNS INC.  
1200 COLUMBIA AVE., RIVERSIDE, CA 92507-2114,  
U.S.A.

Report No. : CE/2005/B3277  
Date : 2005/11/21  
Page : 3 of 4

Test Item (s):	Unit	Method	MDL	Result
				No.1
Chromium VI (Cr+6)	ppm	UV-VIS after reference to US EPA 3060A.	2	N.D.
Cadmium (Cd)	ppm	ICP-AES after reference to EN 1122, method B:2001 or other acid digestion.	2	N.D.
Mercury (Hg)	ppm	ICP-AES after reference to US EPA 3052 or other acid digestion.	2	N.D.
Lead (Pb)	ppm	ICP-AES after reference to US EPA 3050B or other acid digestion.	2	18.7

NOTE: (1) N.D. = Not detected (<MDL)  
(2) ppm = mg/kg  
(3) MDL = Method Detection Limit  
(4) " - " = No Regulation

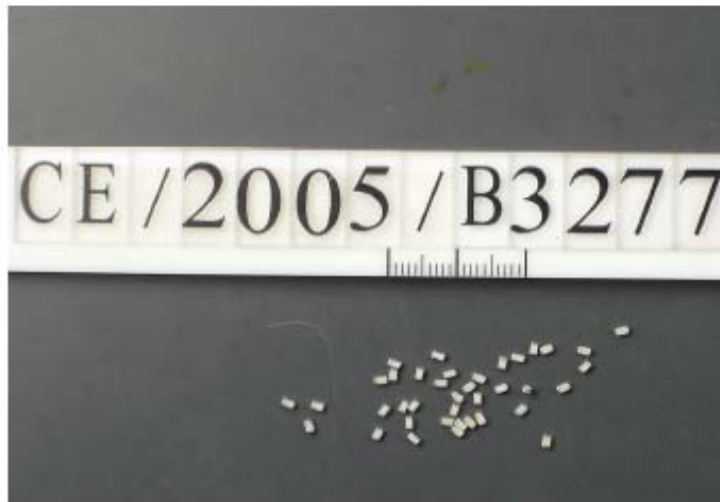
The content of this PDF file is in accordance with the original issued reports for reference only. This Test Report cannot be reproduced, except in full, without prior written permission of the Company



## Test Report

BOURNS INC.  
1200 COLUMBIA AVE., RIVERSIDE, CA 92507-2114,  
U.S.A.

Report No. : CE/2005/B3277  
Date : 2005/11/21  
Page : 4 of 4



The content of this PDF file is in accordance with the original issued reports for reference only. This Test Report cannot be reproduced, except in full, without prior written permission of the Company.

SGS TAIWAN LIMITED

NO. 196-1, Wu Kung Road, WuKu Industrial Zone, Taipei county, Taiwan.  
t(886-2) 22098989 f(886-2) 2209-3237 www.sgs.com.tw