

# Model 1500 Series Gigabit Ethernet SPD

# BOURNS®

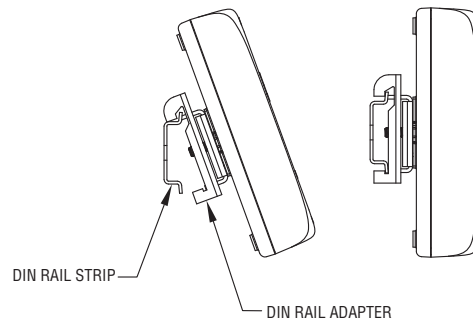
## INSTALLATION INSTRUCTIONS

### WARNING:

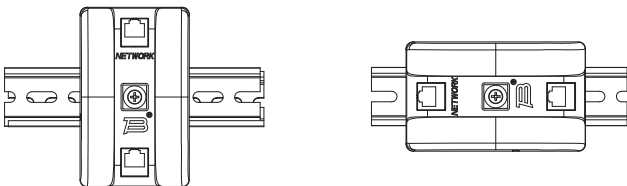
Failure to connect the protector to a verified ground connection can result in improper operation of the protector during a surge event.

### Model 1500-1D, 1500-2D, 1500-2D-W

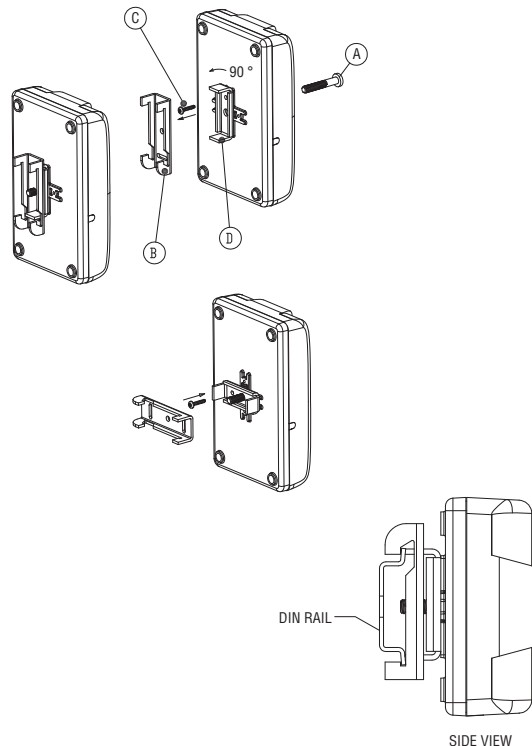
1. For Model 1500-2D, verify that the DIN rail strip has a known and verified ground connection. Otherwise, use Model 1500-2D-W.
2. Loosen the screw holding the DIN rail adapters.
3. From an angle, hook the DIN rail adapter to the DIN rail strip.
4. Tighten the screw until the module locks in place.
5. Plug the exposed RJ45 plug into the RJ45 socket labeled "NETWORK".
6. Plug the protected RJ45 plug (EQUIPMENT) into the RJ45 socket on the other end.
7. MODEL 1500-2D-W: Connect the ground wire to a known and verified ground connection.



### To Reorient Clamps to Vertical/Horizontal Position:



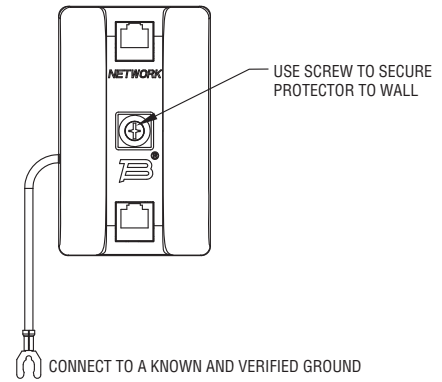
1. Remove screw "A".
2. Remove upper clamp "B".
3. Remove screw "C" that holds lower clamp "D".
4. Rotate lower clamp "D" 90 ° around the hole at the center of the enclosure.
5. Fasten the screw "C" to hold lower clamp "D" in the new position.
6. Adjust upper clamp "B" against lower clamp "D" and turn screw "A" until the upper clamp "D" cannot disengage from "B".



**Model 1500 Series  
Gigabit Ethernet SPD**  
**INSTALLATION INSTRUCTIONS**

**Model 1500-1S, 1500-2S, 1500-2S-W**

1. Using a mounting screw (not provided), mount the adapter to the wall/frame or a secure platform.
2. Plug the exposed RJ45 plug into the RJ45 socket labeled "NETWORK".
3. Plug the protected RJ45 plug (EQUIPMENT) into the RJ45 socket on the other end.
4. MODEL 1500-2S-W: Connect the ground wire to a known and verified ground connection.



**BOURNS®**

**Asia-Pacific:** Tel: +886-2 2562-4117 • Fax: +886-2 2562-4116

**Europe:** Tel: +41-41 768 5555 • Fax: +41-41 768 5510

**The Americas:** Tel: +1-951 781-5500 • Fax: +1-951 781-5700

**www.bourns.com**