



Features

- Formerly J. W. Miller® model
- Current rating up to 2.5 A
- Inductance range: 10 μ H to 10,000 μ H
- RoHS compliant*

This series is currently available but not recommended for new designs.

BOURNS®

RL855 Series - Radial Lead RF Choke

Electrical Specifications (@ 25 °C)

Part Number	Inductance (μ H)	Tol.	Q	Test Frequency		SRF (MHz) Min.	DCR (Ω) Max.	I dc (mA)
				L	Q			
RL855-100M-RC	10	± 20 %	45	1.0 KHz	2.5 MHz	20	0.07	2500
RL855-120M-RC	12	± 20 %	45	1.0 KHz	2.5 MHz	16	0.08	2400
RL855-150M-RC	15	± 20 %	45	1.0 KHz	2.5 MHz	14	0.09	2100
RL855-180M-RC	18	± 20 %	32	1.0 KHz	2.5 MHz	13	0.10	2000
RL855-220K-RC	22	± 10 %	32	1.0 KHz	2.5 MHz	11	0.12	1700
RL855-270K-RC	27	± 10 %	32	1.0 KHz	2.5 MHz	9.5	0.14	1600
RL855-330K-RC	33	± 10 %	22	1.0 KHz	2.5 MHz	8.0	0.17	1400
RL855-390K-RC	39	± 10 %	22	1.0 KHz	2.5 MHz	7.0	0.21	1300
RL855-470K-RC	47	± 10 %	22	1.0 KHz	2.5 MHz	4.5	0.24	1200
RL855-560K-RC	56	± 10 %	22	1.0 KHz	2.5 MHz	4.5	0.31	1100
RL855-680K-RC	68	± 10 %	22	1.0 KHz	2.5 MHz	4.5	0.34	1000
RL855-820K-RC	82	± 10 %	22	1.0 KHz	2.5 MHz	5.3	0.40	930
RL855-101K-RC	100	± 10 %	20	1.0 KHz	790 KHz	4.8	0.52	810
RL855-121K-RC	120	± 10 %	20	1.0 KHz	790 KHz	4.8	0.59	760
RL855-151K-RC	150	± 10 %	20	1.0 KHz	790 KHz	3.5	0.71	670
RL855-181K-RC	180	± 10 %	20	1.0 KHz	790 KHz	3.5	0.89	620
RL855-221K-RC	220	± 10 %	20	1.0 KHz	790 KHz	3.2	1.04	540
RL855-271K-RC	270	± 10 %	20	1.0 KHz	790 KHz	3.2	1.28	490
RL855-331K-RC	330	± 10 %	20	1.0 KHz	790 KHz	3.2	1.47	440
RL855-391K-RC	390	± 10 %	20	1.0 KHz	790 KHz	3.2	1.67	410
RL855-471K-RC	470	± 10 %	20	1.0 KHz	790 KHz	2.5	1.95	380
RL855-561K-RC	560	± 10 %	20	1.0 KHz	790 KHz	2.5	2.83	350
RL855-681K-RC	680	± 10 %	34	1.0 KHz	790 KHz	1.7	3.25	320
RL855-821K-RC	820	± 10 %	34	1.0 KHz	790 KHz	1.7	3.82	310
RL855-102K-RC	1000	± 10 %	80	1.0 KHz	250 KHz	1.70	5.28	250
RL855-122K-RC	1200	± 10 %	80	1.0 KHz	250 KHz	1.70	6.03	230
RL855-152K-RC	1500	± 10 %	80	1.0 KHz	250 KHz	1.70	7.15	210
RL855-182K-RC	1800	± 10 %	80	1.0 KHz	250 KHz	0.95	8.26	200
RL855-222K-RC	2200	± 10 %	80	1.0 KHz	250 KHz	0.95	11.1	180
RL855-272K-RC	2700	± 10 %	80	1.0 KHz	250 KHz	0.95	13.1	160
RL855-332K-RC	3300	± 10 %	80	1.0 KHz	250 KHz	0.95	15.9	140
RL855-392K-RC	3900	± 10 %	80	1.0 KHz	250 KHz	0.95	18.0	130
RL855-472K-RC	4700	± 10 %	80	1.0 KHz	250 KHz	0.95	23.9	120
RL855-562K-RC	5600	± 10 %	80	1.0 KHz	250 KHz	0.55	26.8	110
RL855-682K-RC	6800	± 10 %	80	1.0 KHz	250 KHz	0.55	31.7	98
RL855-822K-RC	8200	± 10 %	80	1.0 KHz	250 KHz	0.55	46.5	88
RL855-103K-RC	10,000	± 10 %	80	1.0 KHz	79 KHz	0.55	55.7	81

General Specifications

Rated Current..... Inductance drop 10 %
 Operating Temperature-30 °C to +100 °C
 Storage Temperature-30 °C to +100 °C

Materials

Core Material..... Ferrite
 Wire Enameled copper
 Terminal Coating..... Sn

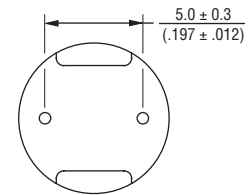
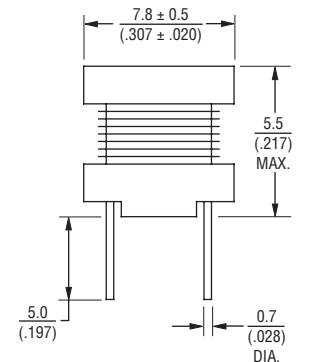
Marking

..... Value code on top of inductor

Packaging

Standard..... 100 pcs. per bag

Product Dimensions



DIMENSIONS: $\frac{\text{MM}}{\text{(INCHES)}}$

How To Order

RL855 - 152K - RC

Model _____
 Value/Tolerance Code (see table) _____
 Compliance Code _____
 RC = RoHS Compliant

Example:

RL855-152K-RC = 1500 μ H, ± 10 %

Electrical Schematic



REV. 11/22

*RoHS Directive 2015/863, Mar 31, 2015 and Annex. Specifications are subject to change without notice. Users should verify actual device performance in their specific applications.

The products described herein and this document are subject to specific legal disclaimers as set forth on the last page of this document, and at www.bourns.com/docs/legal/disclaimer.pdf.



