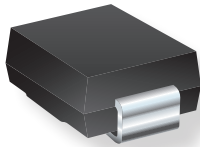


Product Extension Release

TVS DIODES



Bourns Adds New Voltages to the Model 5.0SMDJ TVS Diode Series

Riverside, California - May 17, 2018 - Bourns is pleased to announce the release of new voltages to extend the existing range of the [Model 5.0SMDJ Series](#) Transient Voltage Suppressor Diodes. The new voltages range from 5 V to 11 V, unidirectional and bidirectional, and 51 V to 85 V bidirectional. Table 1 on page 2 lists the new products.

Communications, industrial control and automation, and power supply manufacturers are challenging the semiconductor industry to develop increasingly higher power density circuit protection components. The Model 5.0SMDJ Transient Voltage Suppressor Diodes provide protection for surge and ESD applications, in compact chip package DO-214AB (SMC).

Series	Additional Standoff Voltage	Complete Range Standoff Voltage	Directional	Power Wattage
5.0SMDJ	5 ~ 11V	5 ~ 170V	Unidirectional	5000 W
	5 ~ 11V 51 ~ 85V	5 ~ 85V	Bidirectional	5000 W

The series is RoHS compliant*, halogen free**, and aids compliance with the following industry standards: IEC 61000-4-2 ESD (Min. Level 4), IEC 61000-4-4 EFT, and IEC 61000-4-5 Surge.

The product data sheet with detailed specifications can be viewed on Bourns' website at <http://bourns.com/products/diodes/tvs-diodes>.

Features

- RoHS compliant* and halogen free**
- Surface mount package
- Breakdown voltage: 12 to 170 volts
- Typical temperature coefficient: $AV_{BR} = 0.1 \% \times V_{BR} @ 25^{\circ}C \times \Delta T$

* RoHS Directive 2015/863, Mar 31, 2015 and Annex.

** Bourns considers a product to be "halogen free" if (a) the Bromine (Br) content is 900 ppm or less; (b) the Chlorine (Cl) content is 900 ppm or less; and (c) the total Bromine (Br) and Chlorine (Cl) content is 1500 ppm or less.

ESD1811

	Unidirectional Device	Bidirectional Device	
NEW!	5.0SMDJ5.0A	5.0SMDJ5.0CA	NEW!
	5.0SMDJ6.0A	5.0SMDJ6.0CA	
	5.0SMDJ6.5A	5.0SMDJ6.5CA	
	5.0SMDJ7.0A	5.0SMDJ7.0CA	
	5.0SMDJ7.5A	5.0SMDJ7.5CA	
	5.0SMDJ8.0A	5.0SMDJ8.0CA	
	5.0SMDJ8.5A	5.0SMDJ8.5CA	
	5.0SMDJ9.0A	5.0SMDJ9.0CA	
	5.0SMDJ10A	5.0SMDJ10CA	
	5.0SMDJ11A	5.0SMDJ11CA	
		5.0SMDJ12A	
	5.0SMDJ13A	5.0SMDJ13CA	
	5.0SMDJ14A	5.0SMDJ14CA	
	5.0SMDJ15A	5.0SMDJ15CA	
	5.0SMDJ16A	5.0SMDJ16CA	
	5.0SMDJ17A	5.0SMDJ17CA	
	5.0SMDJ18A	5.0SMDJ18CA	
	5.0SMDJ20A	5.0SMDJ20CA	
	5.0SMDJ22A	5.0SMDJ22CA	
	5.0SMDJ24A	5.0SMDJ24CA	
	5.0SMDJ26A	5.0SMDJ26CA	
	5.0SMDJ28A	5.0SMDJ28CA	
	5.0SMDJ30A	5.0SMDJ30CA	
	5.0SMDJ33A	5.0SMDJ33CA	
	5.0SMDJ36A	5.0SMDJ36CA	
	5.0SMDJ40A	5.0SMDJ40CA	
	5.0SMDJ43A	5.0SMDJ43CA	
	5.0SMDJ45A	5.0SMDJ45CA	
	5.0SMDJ48A	5.0SMDJ48CA	
	5.0SMDJ51A	5.0SMDJ51CA	NEW!
	5.0SMDJ54A	5.0SMDJ54CA	
	5.0SMDJ58A	5.0SMDJ58CA	
	5.0SMDJ60A	5.0SMDJ60CA	
	5.0SMDJ64A	5.0SMDJ64CA	
	5.0SMDJ70A	5.0SMDJ70CA	
	5.0SMDJ75A	5.0SMDJ75CA	
	5.0SMDJ78A	5.0SMDJ78CA	
	5.0SMDJ85A	5.0SMDJ85CA	
	5.0SMDJ90A		
	5.0SMDJ100A		
	5.0SMDJ110A		
	5.0SMDJ120A		
	5.0SMDJ130A		
	5.0SMDJ150A		
	5.0SMDJ160A		
	5.0SMDJ170A		