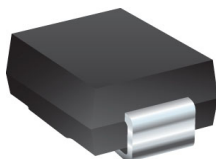




# NEW PRODUCT RELEASE

## SEMICONDUCTOR PRODUCTS



### Bourns Introduces Transient Voltage Suppressor Diodes

#### 5.0SMDJ-R Series

Riverside, California - November 18, 2025 – Bourns is pleased to announce the new [5.0SMDJ-R Series](#) in a compact DO-214AB package to provide effective ESD protection for portable communications, computing and video equipment applications.

This Transient Voltage Suppressor Series offers a choice of Working Peak Reverse Voltage from 12 V to 30 V. 13 unidirectional and 8 bidirectional models are available.

Part Numbers	Max. Repetitive Standoff Voltage (V)	Package
5.0SMDJ12A-R	12	DO-214AB (Unidirectional)
5.0SMDJ13A-R	13	
5.0SMDJ14A-R	14	
5.0SMDJ15A-R	15	
5.0SMDJ16A-R	16	
5.0SMDJ17A-R	17	
5.0SMDJ18A-R	18	
5.0SMDJ20A-R	20	
5.0SMDJ22A-R	22	
5.0SMDJ24A-R	24	
5.0SMDJ26A-R	26	
5.0SMDJ28A-R	28	
5.0SMDJ30A-R	30	

Part Numbers	Max. Repetitive Standoff Voltage (V)	Package
5.0SMDJ12CA-R	12	DO-214AB (Bidirectional)
5.0SMDJ13CA-R	13	
5.0SMDJ14CA-R	14	
5.0SMDJ15CA-R	15	
5.0SMDJ16CA-R	16	
5.0SMDJ17CA-R	17	
5.0SMDJ18CA-R	18	
5.0SMDJ20CA-R	20	

The 5.0SMDJ-R Series is RoHS compliant\*. The product data sheet with detailed specifications can be viewed on the Bourns website at [bourns.com/products/diodes/tvs-diodes](https://bourns.com/products/diodes/tvs-diodes). If you have any questions or need additional information, please feel free to contact [Bourns Customer Service/ Inside Sales](#).

#### Features

- Surface mount SMC package
- Standoff voltage: 12 to 30 volts
- Peak pulse power: 5000 watts
- Typical temperature coefficient:  $\Delta V_{BR} = 0.1 \% \times V_{BR} @ 25^{\circ}\text{C} \times \Delta T$
- RoHS compliant\* and halogen free\*\*

#### Applications

- Portable communications
- Computing and video equipment

#### Additional Information

[DATA SHEET](#)[PRODUCT SELECTOR](#)[TECHNICAL LIBRARY](#)[INVENTORY](#)[SAMPLES](#)[CONTACT](#)

\* RoHS Directive 2015/863, Mar 31, 2015 and Annex.

\*\* Bourns considers a product to be "halogen free" if (a) the Bromine (Br) content is 900 ppm or less; (b) the Chlorine (Cl) content is 900 ppm or less; and (c) the total Bromine (Br) and Chlorine (Cl) content is 1500 ppm or less

ESD2524