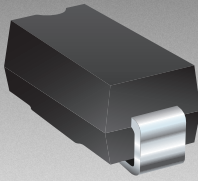


\*RoHS COMPLIANT



**BOURNS®**

## Features

- RoHS compliant\*
- Reverse voltage from 20 to 60 V
- Forward current of 1 A
- High current capability



The **Model CD214B-B2xR Series** is the recommended replacement.

- For use in low voltage high frequency inverters, free wheeling and polarity protection applications

## CD214B-B120 ~ B160 Schottky Barrier Rectifier Chip Diode

### General Information

The markets of portable communications, computing and video equipment are challenging the semiconductor industry to develop increasingly smaller electronic components.

Bourns offers Schottky Rectifier Diodes for rectification applications, in compact chip package DO-214AA (SMB) size format, which offer PCB real estate savings and are considerably smaller than most competitive parts. The Schottky Rectifier Diodes offer a forward current of 1 A with a choice of repetitive peak reverse voltage of 20 V up to 60 V.

Bourns® Chip Diodes conform to JEDEC standards, are easy to handle with standard pick and place equipment and their flat configuration minimizes roll away.

### Electrical Characteristics (@ T<sub>A</sub> = 25 °C Unless Otherwise Noted)

Parameter	Symbol	CD214B-					Unit
		B120	B130	B140	B150	B160	
Maximum Repetitive Peak Reverse Voltage	V <sub>RRM</sub>	20	30	40	50	60	V
Maximum RMS Voltage	V <sub>RMS</sub>	14	21	28	35	42	V
Maximum DC Blocking Voltage	V <sub>DC</sub>	20	30	40	50	60	V
Maximum Average Forward Rectified Current <sup>1</sup>	I <sub>(AV)</sub>	1					A
DC Reverse Current @ Rated DC Blocking Voltage (@T <sub>A</sub> = 25 °C)	I <sub>R</sub>	0.5					mA
DC Reverse Current @ Rated DC Blocking Voltage (@T <sub>A</sub> = 100 °C)	I <sub>R</sub>	10					mA
Typical Junction Capacitance <sup>2</sup>	C <sub>J</sub>	110					pF
Maximum Instantaneous Forward Voltage @ 1 A	V <sub>F</sub>	0.5		0.7			V
Typical Thermal Resistance <sup>3</sup>	R <sub>θJA</sub>	22					°C/W
Peak forward surge current 8.3 ms single half sine-wave superimposed on rated load (JEDEC Method)	I <sub>FSM</sub>	30					A

Notes:

1 See Forward Derating Curve.

2 Measured at 1 MHz and an applied reverse voltage of 4.0 V.

3 Thermal resistance from junction to ambient and from junction to lead P.C.B. mounted on 0.2 x 0.2 ~ (5.0 x 5.0 mm) copper pad areas.

### Thermal Characteristics (@ T<sub>A</sub> = 25 °C Unless Otherwise Noted)

Parameter	Symbol	CD214B-					Unit
		B120	B130	B140	B150	B160	
Operating Temperature Range	T <sub>J</sub>	-55 to +125			-55 to +150		°C
Storage Temperature Range	T <sub>STG</sub>	-55 to +150					°C

\*RoHS Directive 2002/95/EC Jan. 27, 2003 including annex and RoHS Recast 2011/65/EU June 8, 2011.

Specifications are subject to change without notice.

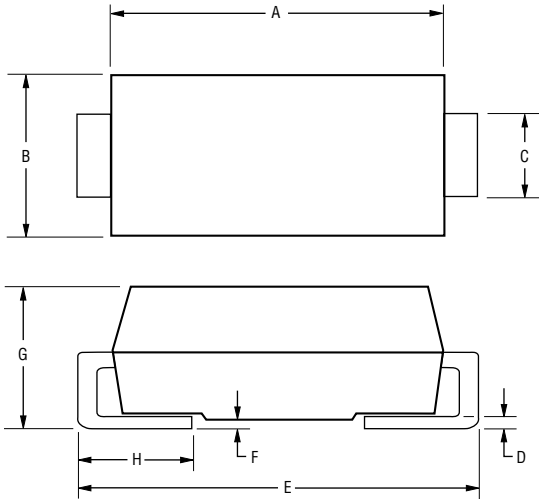
The device characteristics and parameters in this data sheet can and do vary in different applications and actual device performance may vary over time.

Users should verify actual device performance in their specific applications.

# CD214B-B120 ~ B160 Schottky Barrier Rectifier Chip Diode



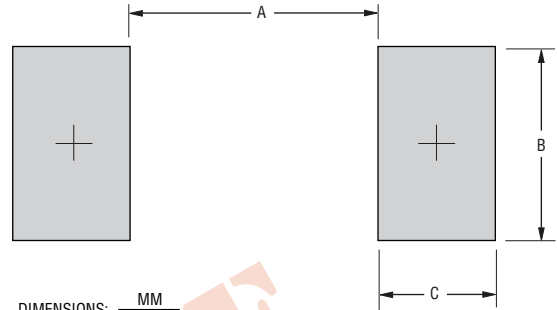
## Product Dimensions



Dimension	SMB (DO-214AA)
A	$\frac{4.06 - 4.57}{(0.160 - 0.180)}$
B	$\frac{3.30 - 3.94}{(0.130 - 0.155)}$
C	$\frac{1.96 - 2.21}{(0.078 - 0.087)}$
D	$\frac{0.15 - 0.31}{(0.006 - 0.112)}$
E	$\frac{5.21 - 5.59}{(0.205 - 0.220)}$
F	$\frac{0.05 - 0.20}{(0.002 - 0.008)}$
G	$\frac{2.01 - 2.62}{(0.080 - 0.103)}$
H	$\frac{0.76 - 1.52}{(0.030 - 0.060)}$

DIMENSIONS:  $\frac{\text{MM}}{\text{(INCHES)}}$

## Recommended Pad Layout



DIMENSIONS:  $\frac{\text{MM}}{\text{(INCHES)}}$

Dimension	SMA (DO-214AC)
A	$\frac{2.90}{(0.114)}$
B	$\frac{3.00}{(0.118)}$
C	$\frac{2.30}{(0.091)}$

## Physical Specifications

Case ..... Molded plastic  
 Polarity ..... Indicated by cathode band  
 Weight.....0.003 ounces / 0.093 grams

## Typical Part Marking

CD214B-B120 ..... **B** 120B  
 CD214B-B130 ..... **B** 130B  
 CD214B-B140 ..... **B** 140B  
 CD214B-B150 ..... **B** 150B  
 CD214B-B160 ..... **B** 160B

## How To Order

**CD 214B - B 1 30 LF**

Common Code \_\_\_\_\_  
 Chip Diode \_\_\_\_\_  
 Package \_\_\_\_\_  
 • 214B = SMB/DO-214AA  
 Model \_\_\_\_\_  
 B = Schottky Barrier Series  
 Average Forward Current ( $I_o$ ) Code \_\_\_\_\_  
 1 = 1 A (Code x 1000 mA = Average Forward Current)  
 Reverse Voltage ( $V_R$ ) Code \_\_\_\_\_  
 20 = 20 V  
 30 = 30 V  
 40 = 40 V  
 50 = 50 V  
 60 = 60 V  
 Terminations \_\_\_\_\_  
 LF = 100 % Sn (RoHS Compliant)

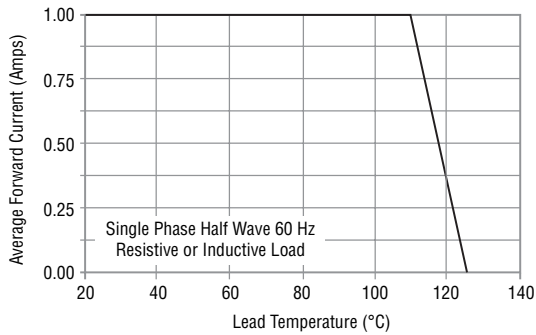
Specifications are subject to change without notice.  
 The device characteristics and parameters in this data sheet can and do vary in different applications and actual device performance may vary over time.  
 Users should verify actual device performance in their specific applications.

# CD214B-B120 ~ B160 Schottky Barrier Rectifier Chip Diode

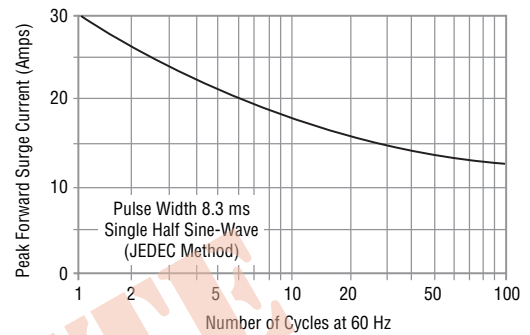


## Rating and Characteristic Curves

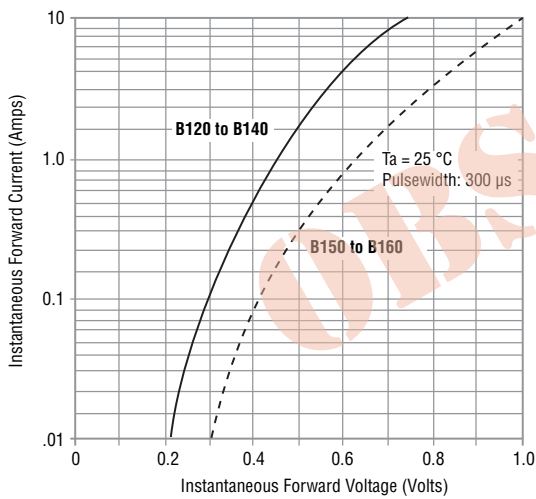
### Forward Current Derating Curve



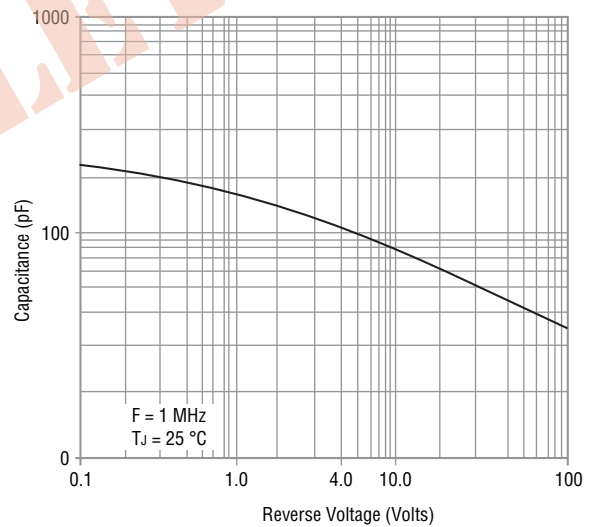
### Maximum Non-Repetitive Surge Current



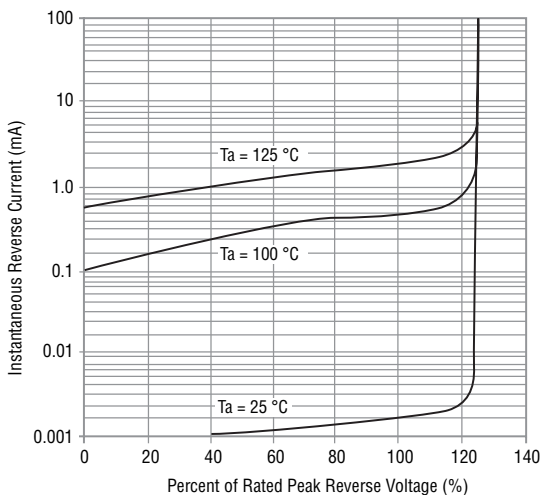
### Typical Forward Characteristics



### Typical Junction Capacitance



### Typical Reverse Characteristics



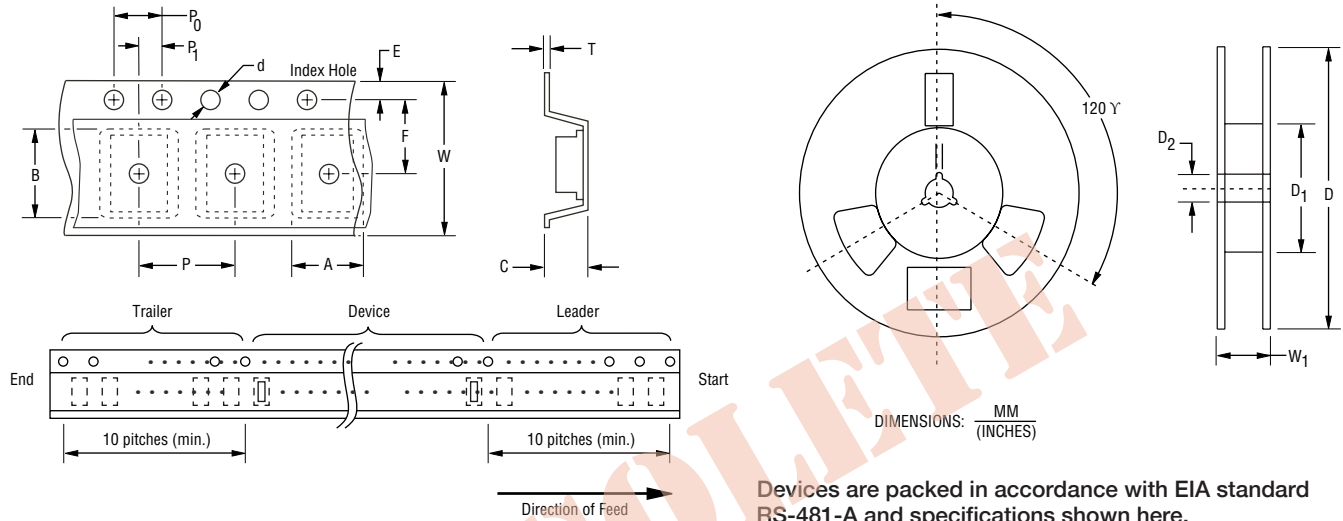
Specifications are subject to change without notice.  
The device characteristics and parameters in this data sheet can and do vary in different applications and actual device performance may vary over time.  
Users should verify actual device performance in their specific applications.

# CD214B-B120 ~ B160 Schottky Barrier Rectifier Chip Diode

**BOURNS®**

## Packaging Information

The product will be dispensed in Tape and Reel format (see diagram below).



Item	Symbol	SMB (DO-214AA)
Carrier Width	A	$4.94 \pm 0.10$ (0.194 ± 0.004)
Carrier Length	B	$5.57 \pm 0.10$ (0.219 ± 0.004)
Carrier Depth	C	$2.36 \pm 0.10$ (0.093 ± 0.004)
Sprocket Hole	d	$1.55 \pm 0.05$ (0.061 ± 0.002)
Reel Outside Diameter	D	330 (12.992)
Reel Inner Diameter	D <sub>1</sub>	50.0 (1.969) MIN.
Feed Hole Diameter	D <sub>2</sub>	$13.0 \pm 0.20$ (0.512 ± 0.008)
Sprocket Hole Position	E	$1.75 \pm 0.10$ (0.069 ± 0.004)
Punch Hole Position	F	$5.50 \pm 0.05$ (0.217 ± 0.002)
Punch Hole Pitch	P	$4.00 \pm 0.10$ (0.157 ± 0.004)
Sprocket Hole Pitch	P <sub>0</sub>	$4.00 \pm 0.10$ (0.157 ± 0.004)
Embossment Center	P <sub>1</sub>	$2.00 \pm 0.05$ (0.079 ± 0.002)
Overall Tape Thickness	T	$0.30 \pm 0.10$ (0.012 ± 0.004)
Tape Width	W	$12.00 \pm 0.20$ (0.472 ± 0.008)
Reel Width	W <sub>1</sub>	18.4 (0.724) MAX.
Quantity per Reel	--	3,000

REV. 01/18

Specifications are subject to change without notice.  
The device characteristics and parameters in this data sheet can and do vary in different applications and actual device performance may vary over time.  
Users should verify actual device performance in their specific applications.