



Features

- Thin 5 mm square SMD
- Three different operating forces
- 0.8 mm height without knob (1.5 mm with knob)
- Compatible with surface mount reflow soldering processes
- RoHS compliant*



STJN-5 SMD Thin Tact Switch

Electrical Characteristics

| | |
|-----------------------|--------------------------------|
| Max. Power Rating |12 VDC max., 50 mA |
| Contact Resistance |100 milliohms max. |
| Insulation Resistance |100 megohms min., 100 VDC |
| Dielectric Strength |AC 250 V for 1 minute |
| Bounce | |
| On |3 ms max. |
| Off |10 ms max. |
| Circuit |N.O. SPST |

Mechanical Characteristics

| | |
|-----------------------------------|--------------------------|
| Mechanical Life | |
| 100 gf + 160 gf |500,000 cycles min. |
| 260 gf |200,000 cycles min. |
| Actuation Force | |
|100 gf ±50 gf (1.0 N ±0.5 N) | |
|160 gf ±50 gf (1.6 N ±0.5 N) | |
|260 gf ±60 gf (2.6 N ±0.6 N) | |
| Stroke |0.25 mm +0.10/-0.20 |

General Characteristics

| | |
|-----------------------------|-----------------------|
| Switch Type |(N.O.) SPST |
| Operating Temperature Range |-20 °C to +70 °C |
| Storage Temperature Range |-40 °C to +85 °C |

How to Order

STJ N - 5 08 - N TR

Model _____
Thin SMD Tact Switch

Product Code _____
N = Non-washable

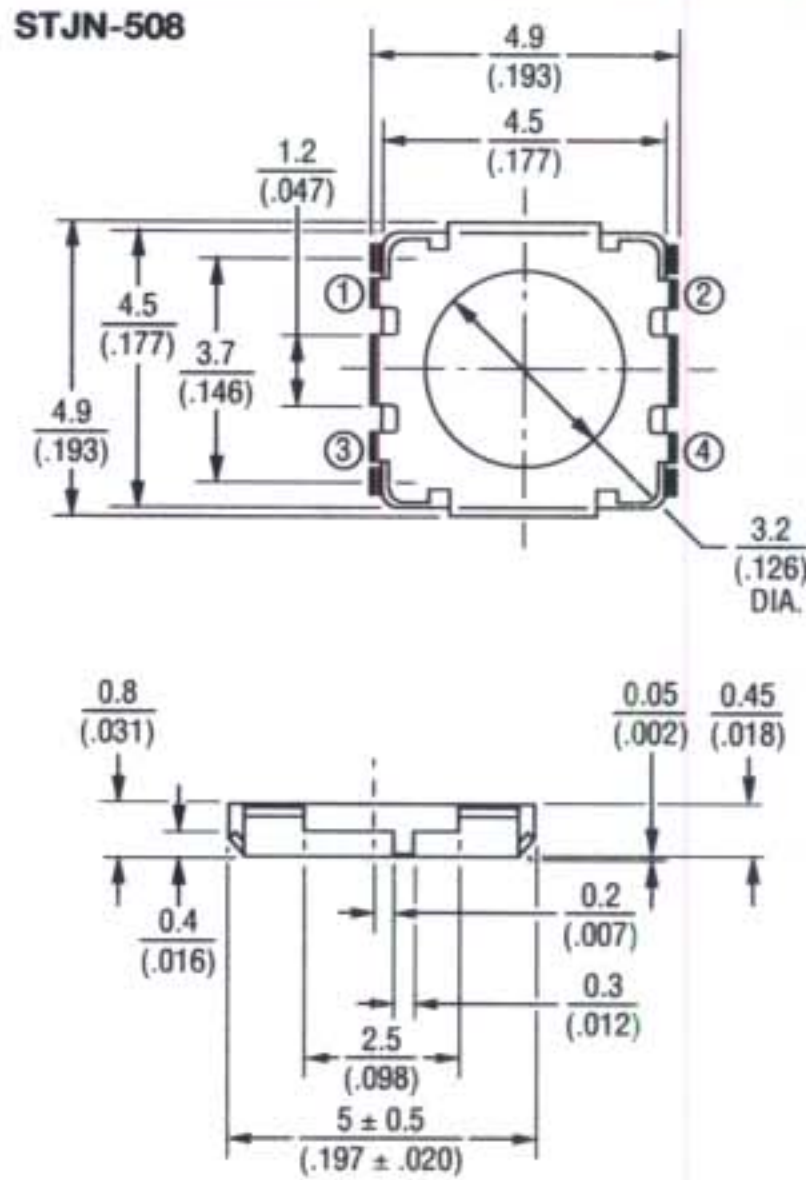
Size _____
5 = 5 mm

Height _____
08 = 0.8 mm (without knob)
15 = 1.5 mm (with knob)

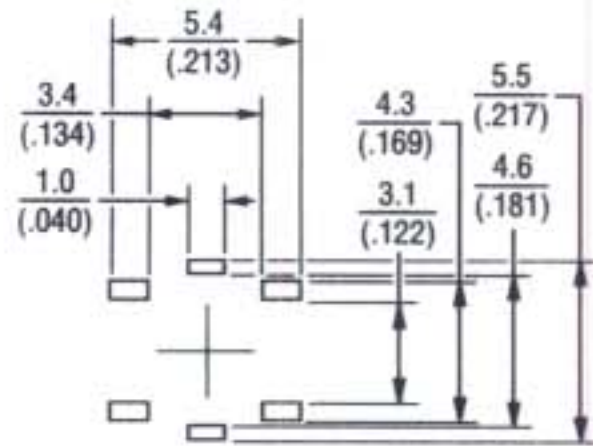
Actuating Force _____
K = 100 gf (1.0 N)
N = 160 gf (1.6 N)
R = 260 gf (2.6 N)

Packaging _____
TR = Embossed Tape
5,000 pcs./reel

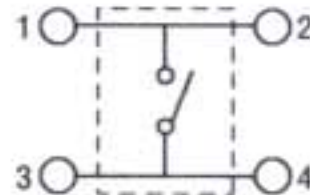
Product Dimensions



Recommended PCB Layout

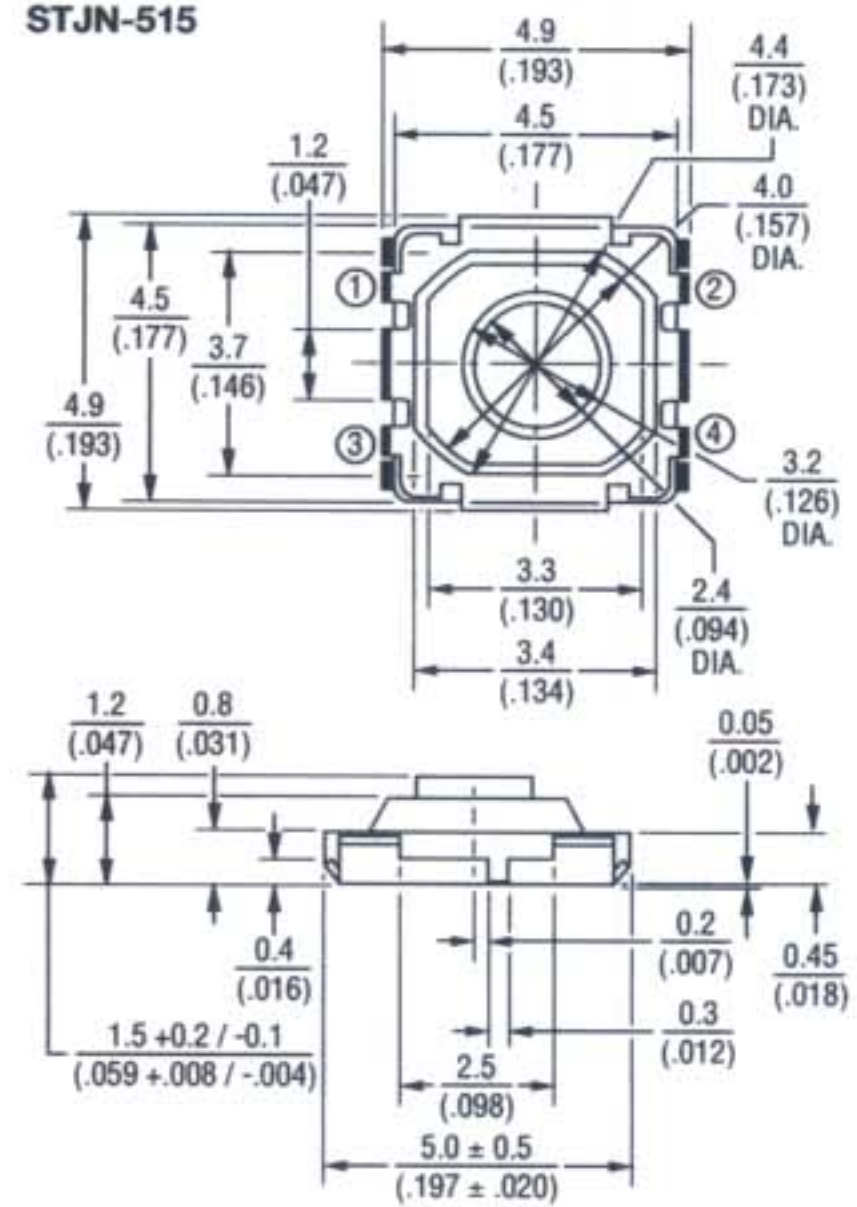


Circuit Diagram

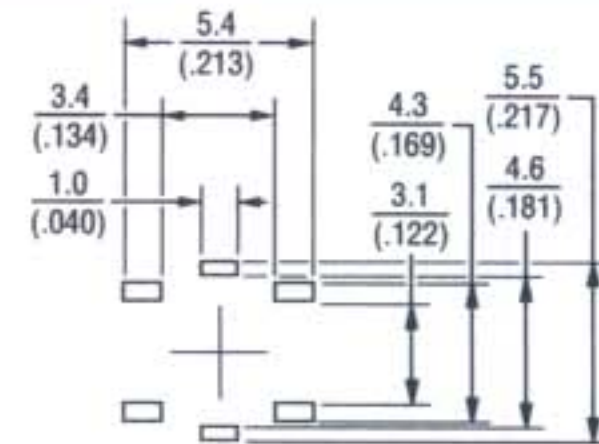


TOLERANCES: ±.38 EXCEPT WHERE NOTED.
DIMENSIONS: $\frac{MM}{(IN)}$

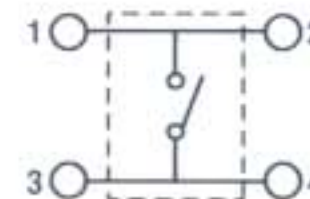
STJN-515



Recommended PCB Layout



Circuit Diagram



Reflow Soldering Profile

