



## Features

- Dimensions of 6, 8 and 10mm
- Carbon element
- Open frame construction
- Vertical or horizontal adjustment

## Applications

- Television sets
- Low cost receivers

# TDB06/TDB08/TDB10 - Trimming Potentiometer

### Electrical Characteristics

Taper .....B (linear)  
 Standard Resistance Range  
 .....500 ohms to 1M ohm  
 (see standard resistance table)  
 Resistance Tolerance .....±30% std.  
 Nominal Resistance Value  
 .....See standard resistance table  
 Residual Resistance  
 .....Max. 100 ohms or ±5%

### Environmental Characteristics

Power Rating  
 TDB06 .....0.05 watt  
 TDB08/10 .....0.1 watt  
 Temperature .....+5% and -30%  
 resistance change  
 after 5 hours at 70°C  
 Load .....5% resistance change max.  
 after 3 hours rated load  
 Humidity ...15% resistance change max.  
 after 5 hours in 95% RH at 40°  
 Load Life...20% resistance change max.  
 after rated load for 350 hours in  
 90% RH at 40°

### Physical Characteristics

Mechanical Angle.....280 ± 20°  
 Rotational Torque.....20-300  
 Stop-End Strength .....5 kg/cm min  
 Mechanical Strength Base.....1.2 cm min  
 Contact Force .....200 mN  
 Rotational Life .....15 resistance  
 change max. after 10  
 rotational life tests  
 Soldering Condition .....60 sec max  
 within 3 seconds

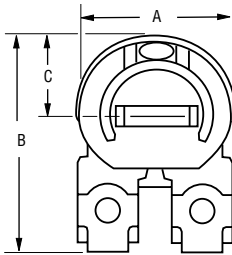
### How To Order

**TDB 08 - 3 103**

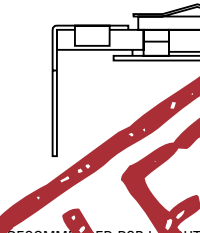
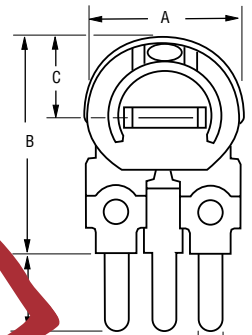
Model \_\_\_\_\_  
 Size \_\_\_\_\_  
 • 06 = 6.5mm  
 • 08 = 8mm  
 • 10 = 10mm  
 Pin/Housing Style \_\_\_\_\_  
 (Refer to drawing)  
 Resistance Code \_\_\_\_\_  
 (See table)

Consult factory for other available options.

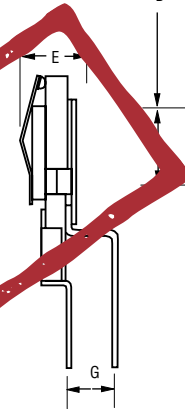
TDB06-5  
 TDB08-5  
 TDB10-4



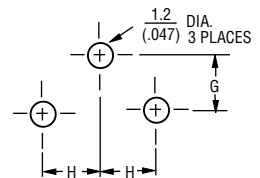
TDB06-6  
 TDB08-3  
 TDB10-8



RECOMMENDED PCB LAYOUT



RECOMMENDED PCB LAYOUT



### Dimensions

	TDB-06-5	TDB-08-5	TDB-10-4
A	6.6	8	10
	.260	.315	.394
B	7.2	11	15.3
	.283	.433	.602
C	3.6	4	7.3
	.142	.157	.278
D	3	4	5
	.118	.157	.197
E	3.8	4	4
	.150	.157	.157
F	6.9	10	15
	.272	.394	.590
G	2.5	2.5	3.5
	.089	.089	.138

### Standard Resistance Table

Resistance (Ohms)	Resistance Code
500	501
1,000	102
2,000	202
5,000	502
10,000	103
20,000	203
50,000	503
100,000	104
200,000	204
500,000	504
1,000,000	105

### Dimensions

	TDB-06-6	TDB-08-3	TDB-10-8
A	6.6	8	10
	.260	.315	.394
B	7.2	11	15.3
	.283	.433	.602
C	3.6	4	7.3
	.142	.157	.278
D	3.5	4	7
	.138	.157	.275
E	2.3	3	3.5
	.090	.118	.138
F	2.5	2.5	1
	.089	.089	.039
G	2.5	2.5	1
	.089	.089	.039
H	2.5	2.5	5
	.089	.089	.197

DIMENSIONS ARE: METRIC (INCHES)

Specifications are subject to change without notice.