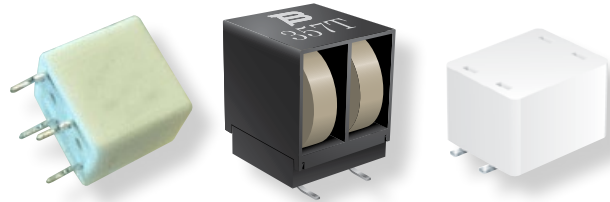


Product Change Notification

CPTC RESETTABLE FUSES



November 30, 2018

Bourns® Model CMF Ceramic PTC Resettable Fuses *Additional Back-End Assembly Lines*

Effective March 4, 2019, Bourns' Ceramic PTC product line will provide additional back-end assembly lines in Sihong, China – currently the site of our front-end production processes. This additional back-end assembly will increase production capacity to address growing demand, provide more efficient inventory and production management, and shorten production lead times. Products from each back-end assembly site will be adequately identified, tracked and recorded through Bourns' internal production and shipment records. Please refer to Table 1 below for more details about the specific product series impacted by this update.

Assembly Processes:

Front-End Process:

Powder mixing → Palletizing → Sintering → Printing Silver Layer → Resistance Classification

Back-End Process:

Soldering* → Coating* → Marking → Assembly → Electrical Testing → Packing

* All Bourns® CMF models include back-end processes of marking, assembly, electrical testing, and packing. In addition, Model CMF-SDP series also includes a soldering process, and Model CMF-RL series includes both soldering and coating processes.

Table 1

Affected Products	Current Back-End Assembly Site	Additional Back-End Assembly Site
CMF-RC series	Changshu, China	Sihong, China
CMF-RD series		
CMF-RL series		
CMF-RLC series		
CMF-RQ series		
CMF-SD series		
CMF-SDP series		

Implementation dates are as follows:

*Effective date: **March 4, 2019***

*First date code: **1910***

If you have any questions or need additional information, please feel free to contact [Bourns Customer Service / Inside Sales](#).