

Features

- RoHS compliant* (see How to Order "Termination" option)
- Increased lead density
- Custom circuits available per factory

For information on thin film applications, download Bourns' Thin Film Application Note.

4800T - Thin Film Medium Body Gull Wing

Product Characteristics

Resistance Range 10 to 100K ohms
 Resistance Tolerance
 $\pm 0.1\%$, $\pm 0.5\%$, $\pm 1\%$
 Temperature Coefficient
 ± 100 ppm/ $^{\circ}$ C, ± 50 ppm/ $^{\circ}$ C,
 ± 25 ppm/ $^{\circ}$ C
 TCR Tracking..... ± 5 ppm/ $^{\circ}$ C
 Temperature Range..... -55° C to $+125^{\circ}$ C
 Maximum Operating Voltage 50 V

Environmental Characteristics

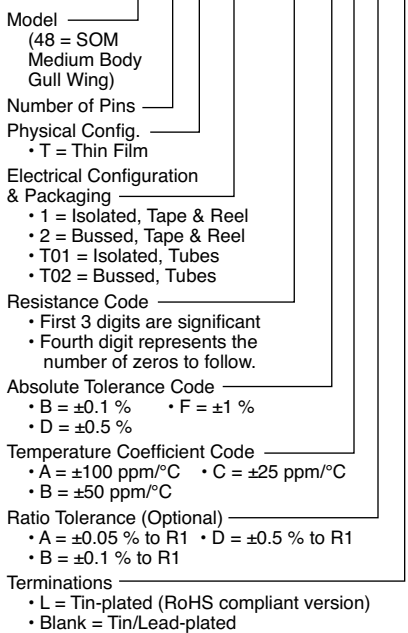
TESTS PER MIL-STD-202..... ΔR MAX.
 Thermal Shock 0.1 %
 Short Time Overload..... 0.1 %
 Resistance to Soldering Heat..... 0.1 %
 Moisture Resistance..... 0.1 %
 Life 0.5 %

Physical Characteristics

Lead Frame Material
 Copper, solder coated
 Body Material Flammability
 Conforms to UL94V-0
 Body Material..... Thermoplastic

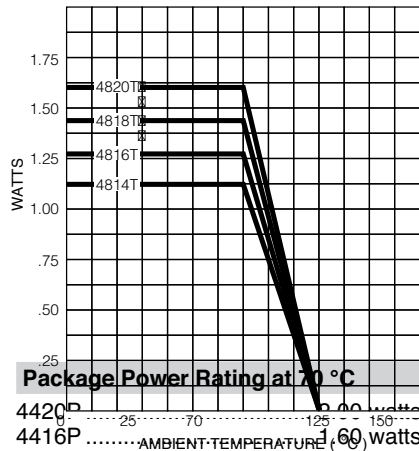
How To Order

48 16 T - 2 - 2222 F A B



Consult factory for other available options.

Package Power Temp. Derating Curve

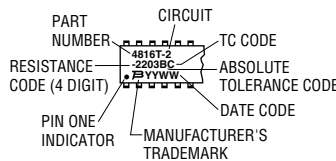


Package Power Rating at 70 °C

4814T	1.12 watts
4816T	1.28 watts
4818T	1.44 watts
4820T	1.60 watts

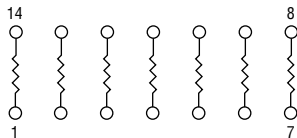
Typical Part Marking

Represents total content. Layout may vary.



Isolated Resistors (1 Circuit)

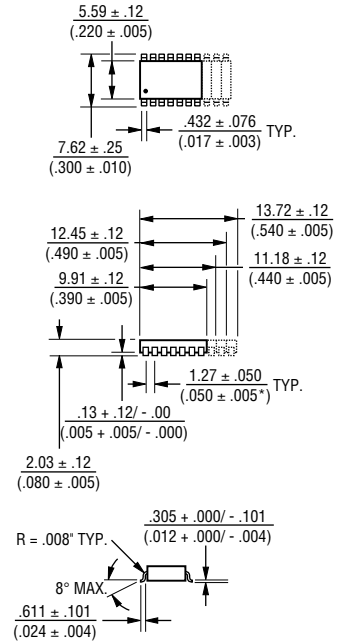
Available in 14, 16, 18, and 20 Pin



These models incorporate 7, 8, 9, or 10 thin-film resistors of equal value, each connected between a separate pin.

Power Rating per Resistor..... 0.10 watt
 Resistance Range 10 to 100K ohms

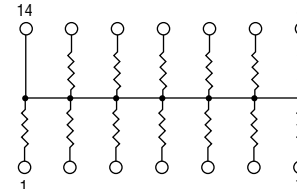
Product Dimensions



Governing dimensions are metric. Dimensions in parentheses are inches and are approximate.

Bussed Resistors (2 Circuit)

Available in 14, 16, 18, and 20 Pin



These models incorporate 13, 15, 17 or 19 thin-film resistors of equal value, each connected by a common pin.

Power Rating per Resistor..... 0.08 watt
 Resistance Range 10 to 50K ohms

REV. 07/15

*RoHS Directive 2002/95/EC Jan. 27, 2003 including annex and RoHS Recast 2011/65/EU June 8, 2011.

Specifications are subject to change without notice.

The device characteristics and parameters in this data sheet can and do vary in different applications and actual device performance may vary over time.

Users should verify actual device performance in their specific applications.